

UPCOMING GROUP SHOW

Up to 35 works on show

May 1-June 1, 2009

Ann Long Fine Art

54 Broad Street

Charleston, SC 29401

(843) 577-0447

• SHOW LOCATION CHARLESTON, SC

Fresh from Florence

Having studied and instructed at the prestigious Florence Academy of Art, **Jordan Sokol**, **Jura Bedic** and **Sofia Alethe Romark** lend their classically trained hands to new works on display at Ann Long Fine Art in Charleston, South Carolina.

Jura Bedic continually seeks inspiration in handmade objects.

"My studio is full of old pots and all different sorts of still life objects. As I paint one painting I already think of a new painting to come," says Bedic. "And as seasons change, so do my themes, as in with the different fruits and vegetables."

Through the study of tonal relationships, Bedic is trying to render form and atmosphere.

"When I paint, I try to always think of my own taste being entertained," says Bedic. "At the end, I believe that the fact

I had lots of fun painting shines through. That is as sincere of an approach as I can think of and it shows my love of beauty."

For Jordan Sokol, the honest reality of things always strikes a chord in his creative process.

"Nature's inherent abstractions—the stories and emotions we attach to the things around us, and how these attachments can apotheosize the commonplace," Sokol explains.

Sokol spent the past six years in Europe, exploring the various roots of western painting, historically and technically, while at the same time, exploring his relationship to this tradition in order to personalize it and make it his own.

"My working methods are rooted in the 19th century academic tradition. The classical tradition of painting is not just about technique or aesthetic, but

a particular way of seeing and dissecting," says Sokol. "The more honest something is, the more it connects those who witness it; and the search for it is lifelong."

Sofia Alethe Romark always works from life, in natural light.

"With natural light, which lives, moves and changes, as models also do, I'll be given many options of different light situations and small differences in my setup," says Romark. "For me, light is beauty. The way light gives an object all the colors of the rainbow and all the values from the brightest white to the darkest black is breathtaking. This, accompanied with atmosphere, is what I try to emphasize in my paintings." •

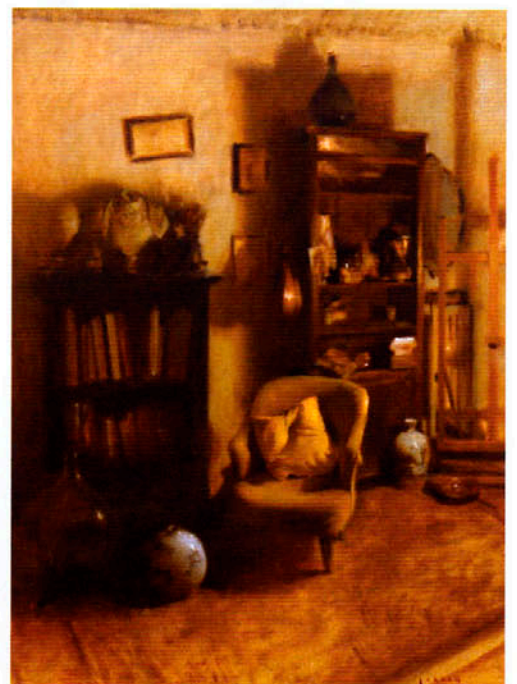
For a direct link to the exhibiting gallery go to



www.americanartcollector.com



JURA BEDIC, VITAMIN C, OIL ON PANEL, 9¼ X 11½"



JORDAN SOKOL, STUDIO INTERIOR, OIL ON CANVAS, 21½ X 16"



JURA BEDIC, EGGS AND MILK, OIL ON PANEL, 11 $\frac{3}{4}$ X 15 $\frac{3}{4}$ "



SOFIA ALETHE ROMARK, GARLIC COMPOSITION, OIL ON PANEL, 11 $\frac{3}{4}$ X 15 $\frac{3}{4}$ "