

#### UPCOMING SHOW

*Up to 25 works on show*

Jan. 25–Feb. 21, 2008

Ann Long Fine Art

177 King Street

Charleston, SC 29401

(843) 577-0447

• SHOW LOCATION CHARLESTON, SC

## KAMILLE CORRY

### Capturing the individual soul

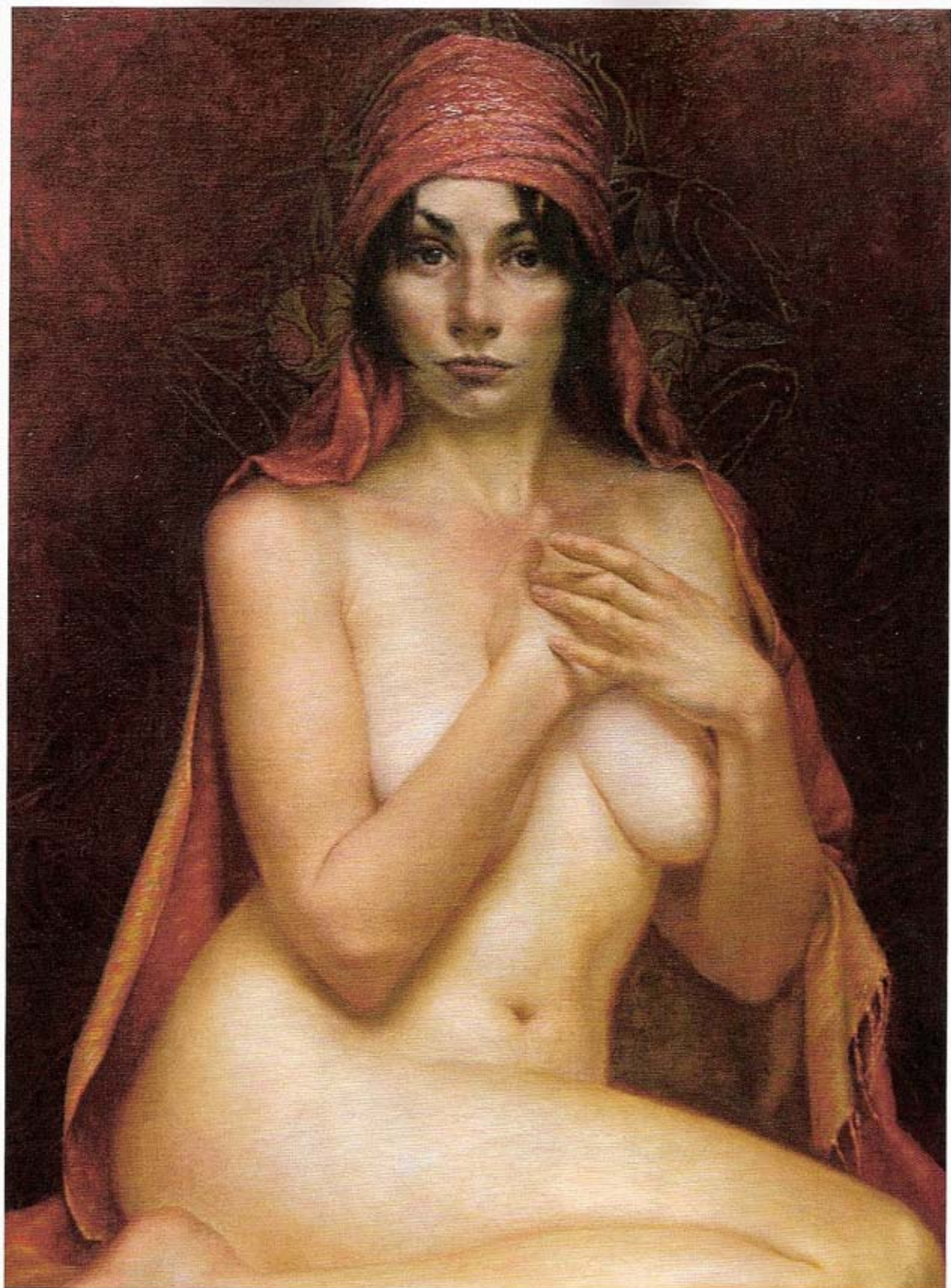
**I**n painting nudes, Kamille Corry finds that a growing inspiration for her these days is not only the challenge of painting the figure, but also the dynamism that occurs between the artist and the model and the interaction that takes place within the artist's studio. While most artists use a number of different models for their work, Corry enjoys focusing on one particular model and capturing her in many different emotions and poses.

"I have been thinking very much about exploring the inspiration and energy that a model gives to an artist, the role that the model plays in creating a piece of work," says Corry. "This comes down to the recognition of the individual and understanding someone on a deeper level than we normally do in everyday interactions."

In this new Charleston exhibition, not only is Corry focusing on just one model and working to capture her



PORTRAIT OF CELESTE, OIL ON LINEN OVER PANEL, 12 X 12"



TRILOGY OF THE SOUL, OIL ON LINEN OVER PANEL, 24 X 18"

*The Gallery Says . . .*

"The depth of flesh tones and subtlety of expression in Kamille's figure work combine to create a quiet elegance in her paintings—most breathtaking."

— Ann Long, Owner, Ann Long Fine Art



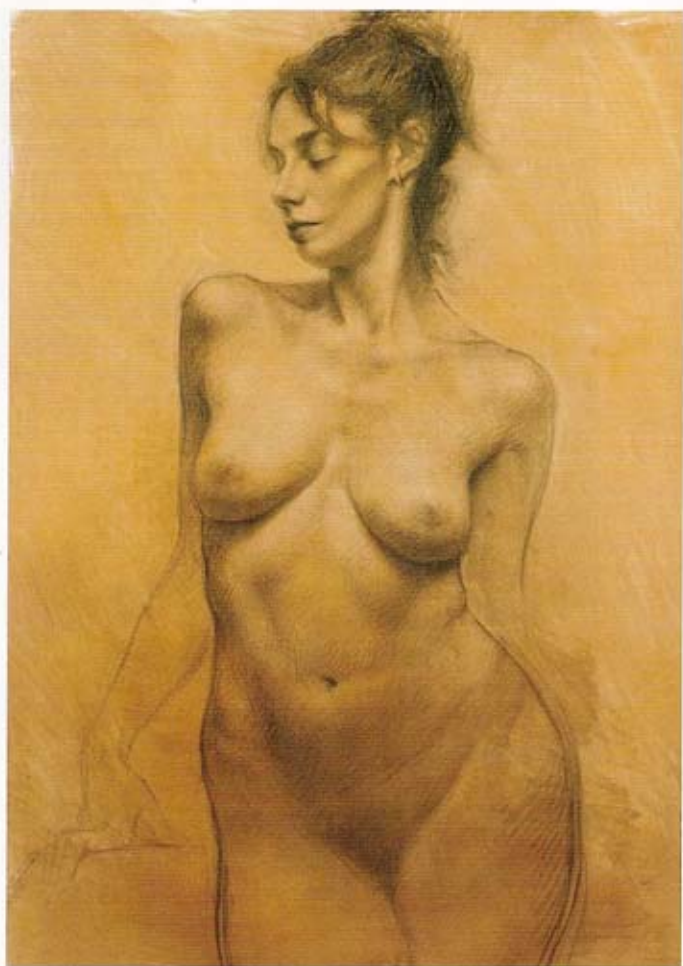
CASSANDRA, CHARCOAL/CONTÉ ON PAPER, 17 X 12"

*The Collector Says . . .*

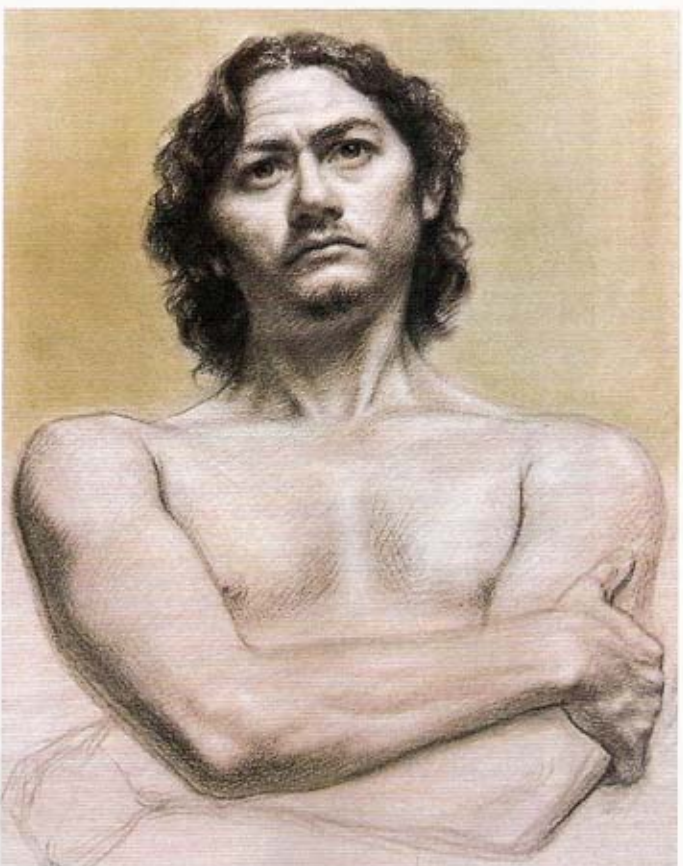
"I admire the warm tones in Corry's paintings of women, whom she seems to have caught in moments of meditative repose. Her rich use of color in the textiles and exotic objects can surprise and delight."

—Karen Gentry

PORTRAIT OF SCOTT, CHARCOAL/INK ON PAPER, 16 X 20"



LEAVING MEMORIES, CHARCOAL ON PAPER, 36 X 24"

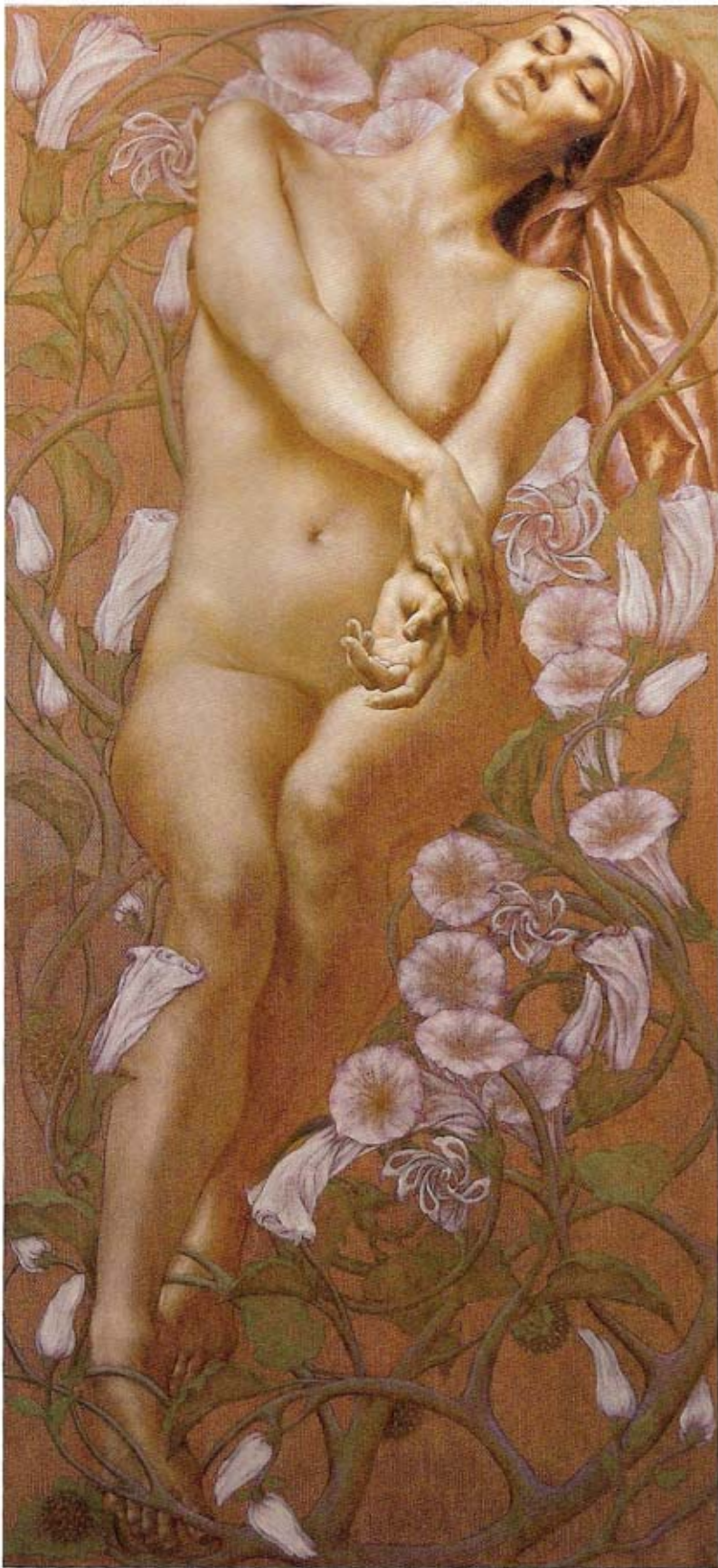


*Price Range Indicator*

Our at-a-glance Price Range Indicator shows what you can expect to pay for this artist's work.

	Small	Medium	Large
2008	\$2,500-\$5,000	\$8,000-\$16,000	\$20,000-\$35,000





STUDY FOR PORTAL, OIL ON LINEN OVER PANEL, 48 X 24"

in a variety of moods, she is also working on one particular kind of light she has come across in a far corner of her studio.

"I have been working with a particular model this year, and I get very moody visions of her face in three different positions in a certain area of my studio which has exceptionally haunting light," says Corry. "Most of the work in the show is studies as well as a triptych based on these images I would get. The show will encompass not only finished oil paintings, but also selected studies that lead up to the finished pieces."

Besides this, the overarching theme of Corry's figurative work is the complexity of the human body and the inevitable challenge that painting such a subject necessitates. For her, this complexity comes from both the construction of the figure as well as its innate ability for expression.

"It is unbelievably challenging to paint and draw," says Corry. "And a challenge which forces you to expand your knowledge is a great inspiration. The structure of the skeleton and muscles, as well as the coloring in skin tones are much more fascinating subjects to paint than clothing. But the biggest reason I love to paint the nude is that it presents to me the human soul in its most honest, vulnerable, beautiful and expressive state."

This capturing of the soul—no matter how she arrives at it—is very important to Corry's work. And lately, she has started to find inspiration from another obscure yet interesting source.

"The color scheme of the painting is based on a certain plant in my yard that was incredibly inspiring at twilight," says Corry. "My husband is a garden designer, and I have been enormously influenced by the designs, colors and rhythms in our garden. I want collectors to find something recognizable in themselves or someone who is close to them. These paintings are about the individual soul—however you choose to define that."

Collectors also have been drawn to Corry's ability to create emotions purely through a visual experience. While she likes to paint mainly what she sees in her numerous sessions with her model, she is even more interested in capturing what is not automatically visible to the eye of the viewer.

"I am trying desperately to be true to myself and nature, but not in the sense of strictly copying from nature," says Corry. "I'm searching for the essence of my subject in order to evoke emotions. A lot of the time, I get comments on a certain quality of light and that the viewers sense strong emotion in my work." ●

For a direct link to the exhibiting gallery go to

[www.americanartcollector.com](http://www.americanartcollector.com)